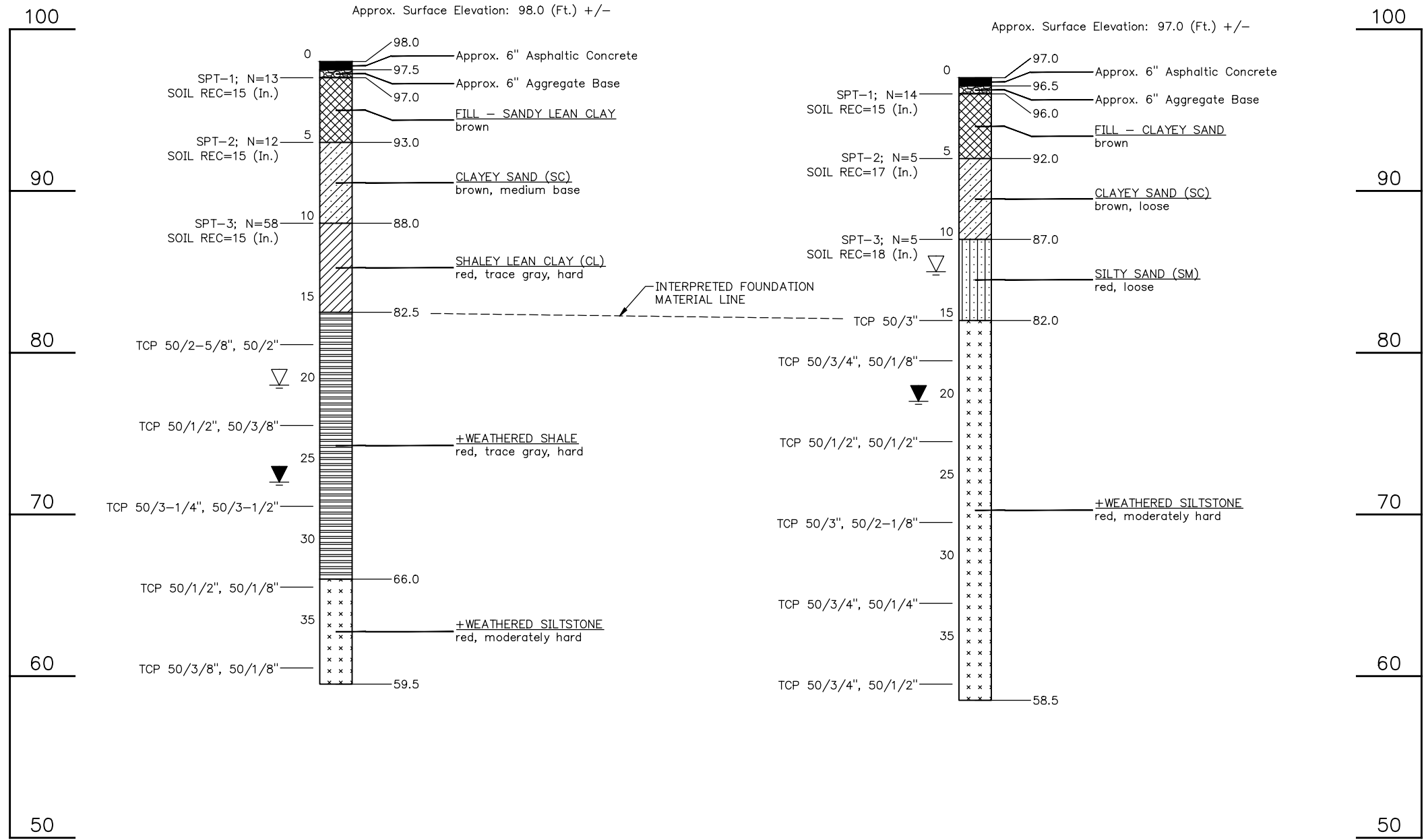


BORING NO. B-1
☉ SURVEY STA. 14+24
5' RT.

WATER LEVEL CHECK: 20.0 FT. WHILE DRILLING
 WATER LEVEL CHECK: 26.0 FT. AFTER BORING
 (3/21/2016)

BORING NO. B-2
☉ SURVEY STA. 14+93
6' LT.

WATER LEVEL CHECK: 20.0 FT. WHILE DRILLING
 WATER LEVEL CHECK: 12.0 FT. AFTER BORING
 (3/21/2016)



GEOLOGY:
 THE GEOLOGY AT THIS SITE CONSISTS OF A SERIES OF RED CLAY SHALES, MASSIVE COMMONLY CROSS-BEDDED LENTICULAR SANDSTONES OF THE GARBER UNIT. THE SANDSTONES ARE MORE PROMINENT IN THE SOUTHERN PORTION OF DIVISION FOUR. NORTHWARD, THE SANDSTONES THIN AND SHALE BECOME MORE DOMINANT. THE TOTAL THICKNESS OF THE UNIT IS ABOUT 400 TO 600 FEET.

NOTE: GROUNDWATER LEVELS WERE OBTAINED DURING THE DRILLING OPERATIONS, AND MAY FLUCTUATE THROUGHOUT THE YEAR.

NOTES: FOR ADDITIONAL TESTING INFORMATION, SEE THE GEOTECHNICAL ENGINEERING REPORT.
 BORING LOCATIONS (STATIONS) ARE NOT TO SCALE HORIZONTALLY.